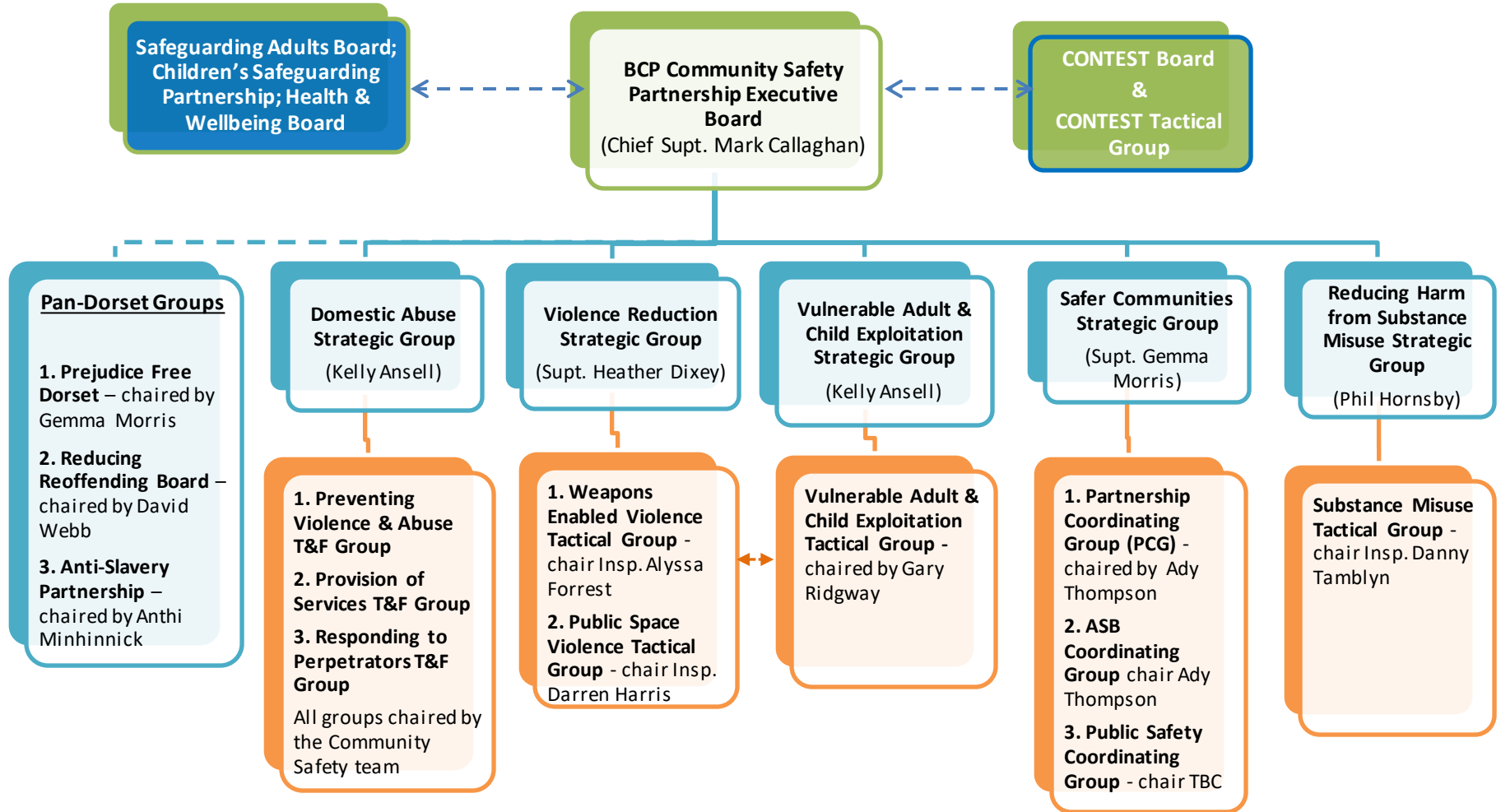


BCP Community Safety Partnership Structure (October 2021)



Groups summarised

Domestic Abuse Strategic Group

- Specialist services for children and young people
- Consistency in service provision across the BCP locality
- Information Sharing between key agencies
- Knowledge and skills of front-line staff
- Perpetrator interventions both within and outside the criminal justice system
- Promotion of services for victims

Sub-Groups:

1. **Preventing Violence & Abuse**
2. **Provision of Services**
3. **Responding to Perpetrators**

Violence Reduction Strategic Group

- Weapons related violence, incl. Knife and Gun crimes
- Sexual Violence, incl. rape, sexual assault and sexual harassment
- Public Space Violence, incl. Alcohol-related violence and robbery

Sub-Groups:

1. **Weapons Enabled Violence Tactical Group** (Knife Crime, Serious Youth Violence)
2. **Public Space Violence Tactical Group** (Alcohol- related, Robbery, Sexual Assaults/harassment)

Vulnerable Adult & Child Exploitation Strategic Group

- Serious Youth Violence, incl. County Lines
- Child Exploitation, incl. criminal and sexual exploitation, and radicalisation

Sub-Group:

1. **Vulnerable Adult & Child Exploitation Tactical Group** (County Lines, CE, Vulnerable YP)

Safer Communities Strategic Group

- Antisocial Behaviour
- Cybercrime and fraud
- Hate Crime
- Road Safety
- Fire Safety
- Community Engagement

Sub-Groups:

1. **Partnership Coordinating Group (PCG)** (SARA Location Planning)
2. **ASB Coordinating Group** (Street, Neighbourhood and Environmental ASB)
3. **Public Safety Coordinating Group** (Fire & Road Safety, Cyber Crime and Fraud, Hate Crime)

Reducing Harm from Substance Misuse Strategic Group

- Illicit drug dealing
- Drugs misuse
- Alcohol misuse
- Substance misuse treatment access
- Community prescribing needs

Sub-Groups:

1. **Substance Misuse Tactical Group** (Public space substance misuse, accessing treatment)

Responsibility and Accountability diagram 1

BCP CSP Executive Board

- Meets quarterly
- Provides executive and strategic leadership for the partnership
- Receives The annual Strategic Assessment
- Agrees the Partnership's priorities
- Approves the annual Partnership Plan for reducing crime, ASB and substance misuse
- Receives partnership performance information and crime and disorder data
- Acts as the budget holder for any pooled or Partnership funding

Partnership Strategic Groups

- Meet bi-monthly
- Develop crime and disorder reduction strategies and plans
- Review the Strategic Assessment and emerging priorities
- Promote information sharing and collaborative working
- Commission projects and initiatives
- Monitor programme delivery and impact
- Assess training needs, support workforce development and improve practice
- Drive communications and develop community information

Tactical & Operational Groups

- Meet fortnightly or monthly
- Develop and deliver approved Delivery Plans
- Coordinate and mobilise resources
- Deliver projects and monitor impact
- Identify and disseminate lessons learnt from service/project delivery
- Monitor and highlight risks and vulnerabilities
- Identify problems, resourcing shortfalls and policy conflicts
- Identify and escalate training needs
- Identify and promote innovation and successes

Responsibility and Accountability diagram 2

